



GOOD MORNING

Have Good Trading Day

WEDNESDAY



Price is what you pay.
Value is what you get.

- Warren Buffet



MARKET PULSE

INDIAN INDICES

NAME	CMP	NET CH.	%
SENSEX	26524	+121	+0.46
NIFTY	8127	+33	+0.41

INDIAN ADR'S

SYMBOL	CLOSE	GAIN/ LOSS %
DRREDDY	49.02	+2.57
HDFCBANK	64.89	+1.90
ICICIBK	6.90	+3.76
INFY	17.55	+1.27
TATAMOTOR	33.37	+3.57
WIPRO	11.90	+1.45

FII AND MF ACTIVITY

SYMBOL	In Crs.
FIIs Eq (Provisional)	-146.11
FIIs Index Future	-791.95
FIIs Index Options	1403.76
FIIs Stock Future	-309.06
FIIs Stock Options	-34.48
DIIs Eq (Provisional)	-147.07

CURRENCY

RBI RATE	28-JUNE-2016
RUPEE - \$	67.8867
EURO	75.0623
YEN 100	66.6900
GBP	90.1739

MARKET PULSE

GLOBAL INDICES

NAME	CMP	NET CH.	%
DOW	17409	+269	+1.57
NASDAQ	4691	+97	+2.12
NIKKEI	15543	+220	+1.44
HANG SENG	20337	+164	+0.82
SGX NIFTY	8162	+31	+0.38

WORLD COMMODITIES

FUTURE	U\$\$	CHANGES
CRUDE	48.23	+0.38
NATURAL GAS	2.872	-0.018
GOLD	1322.6	+4.7
SILVER	18.090	+0.201
COPPER	2.1650	-0.0105

WORLD EVENTS

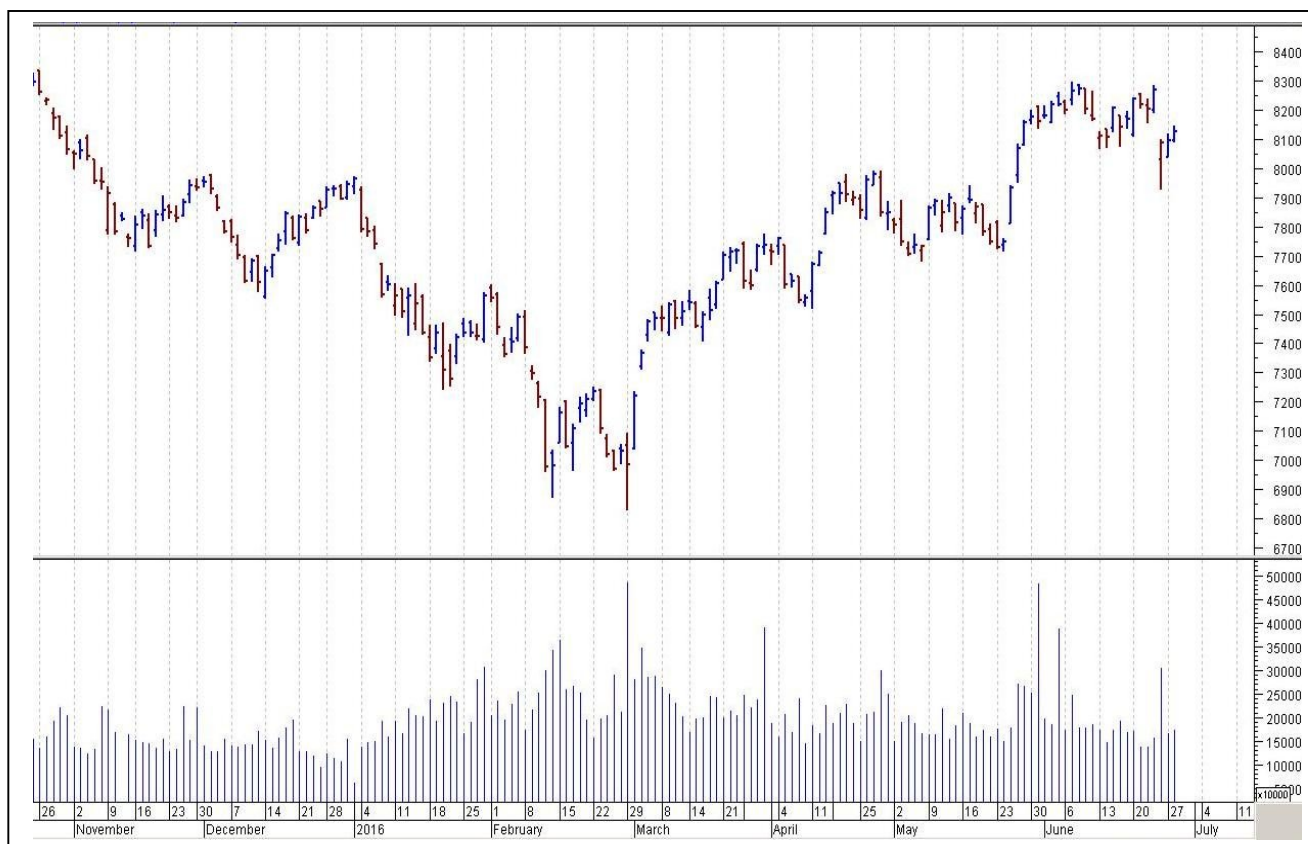
- US: Crude Oil Inventories
- UK: Net Lending to Individuals m/m

TOP STORY

- DLF Promoter KP Singh to infuse Rs 10,000 crore in company: ET. Look to make company debt free
- Adani group -Group eyes financial services: ToI. Ties up with Macquarie for NBFC
- IL&FS Transportation Networks acquires 1.02 percent stake in Noida Toll Bridge at Rs 23.5/share for Rs 4.46 crore
- Strides Shasun gets shareholder nod for divestment of Shasun Pharma Solutions, UK
- NHPC to invest Rs 3,000 crore on solar, wind projects
- ICICI Prudential Life Insurance to launch its Rs 6,000 crore IPO by September: Mint
- JSW Steel may tap global markets for USD 2 billion
- ITC plans to invest Rs 4,000 crore to set up 9 plants over next 2-3 years: BS
- Janus Capital exits DLF
- SBI to divest stake in non-core assets to raise Rs 3,000 crore



NIFTY CHART



MARKET COMMENTARY

Tuesday turned out to be a fabulous day of trade for Indian equity benchmarks, where frontline gauges garnered gains of around half a percent with key indices recapturing their crucial 8,100 (Nifty) and 26,500 (Sensex) levels. Markets started cautiously and traded tad above their neutral lines in first half, but extended their northward journey in second half, as traders took some encouragement with the continuous fall in international crude oil prices. Hopes that India will see above-average south-west monsoon rains after two years of drought too bolstered optimism about the domestic economy, helping offset some of the global volatility tied to Britain's vote to leave the European Union last week. Stronger rains, besides benefiting the key rural sector, could also cool down food prices, raising the prospect that the Reserve Bank of India would be more willing to cut interest rates again later this year. For today's trade Nifty likely to trade in the range between 8135 – 8145 in the upper side and 8115 – 8095 in the lower side.

MARKET LEVELS

	CMP	SUPPORT LEVELS				RESISTANCE LEVELS			
NIFTY	8127	8115	8095	8045	8025	8135	8145	8165	8195
USDINR	68.28	68.2	68.1	68	67.9	68.4	68.5	68.55	68.6



BULK DEALS (BSE)

SCRIP	CLIENT NAME	BUY/SELL	QUANTITY	PRICE
CAMEXLTD	SEVEN HILL INDUSTRIES LIMITED	B	59,765	31.78
CLLIMITED	TOPMOST COMMERCIAL PVT LTD	B	31,693	291.19
PVR	MERRILL LYNCH CAPITAL MARKETS ESPANA SA SV	S	250,000	953
PVR	MERRILL LYNCH MARKETS SINGAPORE PTE. LTD.	B	250,000	953

BULK DEALS (NSE)

SCRIP	CLIENT NAME	BUY/SELL	QUANTITY	PRICE
HANUNG	SOUTHASIANHOSPITALITYSERVICESLIMITED	SELL	408860	6.78
SANCO	MINSHI CREATION PRIVATE LIMITED	SELL	72000	48.07

SCRIP'S IN F&O BAN

(To resume for normal trading below 80% of market wide limit required)

CEATLTD, DLF, HDIL, IBREALEST, RCOM

Initial Public Offering (IPO)

Company Name	Security type	Issue Start Date	Issue End Date	Status
QUESS CORP LTD	Equity	29-JUNE-2016	01-JULY-2016	Forthcoming



NIFTY 50 STOCKS: SUPPORT & RESISTANCE						
Symbol	Close	Support 1	Support 2	Pivot Point	Resistance1	Resistance2
ACC	1598	1585	1573	1598	1611	1623
ADANI PORTS	203	201	200	204	206	208
AMBUJACEM	252	250	248	253	255	257
ASIANPAINT	980	975	971	980	985	990
AXISBANK	514	511	508	516	519	524
BAJAJ-AUTO	2624	2603	2582	2636	2658	2691
BANKBARODA	154	152	149	153	156	158
BHARTIARTL	357	353	349	356	360	363
BHEL	119	118	117	119	120	121
BOSCH LTD	21523	21034	20544	21297	21787	22050
BPCL	1052	1043	1035	1049	1057	1063
CAIRN	134	133	132	135	136	137
CIPLA	497	490	482	494	502	507
COALINDIA	313	311	308	312	315	317
DRREDDY	3273	3244	3215	3264	3294	3314
GAIL	377	374	371	378	381	386
GRASIM	4459	4399	4338	4436	4497	4534
HCLTECH	713	704	694	721	730	747
HDFC	1229	1216	1204	1224	1237	1244
HDFCBANK	1167	1154	1140	1163	1177	1186
HEROMOTOCO	3020	2998	2975	3036	3058	3096
HINDALCO	118	117	116	119	120	122
HINDUNILVR	888	868	848	879	899	910
ICICIBANK	233	231	228	232	235	237
IDEA	104	102	99	103	106	108
INDUSINDBK	1085	1077	1070	1084	1091	1098
INFY	1159	1152	1145	1162	1169	1180
ITC	369	362	355	366	372	376
KOTAKBANK	743	738	733	743	748	753
LT	1474	1464	1454	1478	1488	1501
LUPIN	1545	1497	1449	1523	1571	1596
M&M	1409	1392	1376	1403	1419	1430
MARUTI	4079	4052	4025	4067	4094	4109
NTPC	148	147	145	149	150	152
ONGC	211	210	209	211	212	213
PNB	104	103	102	104	105	107
POWERGRID	155	154	153	155	156	157
RELIANCE	958	955	952	958	961	965
SBIN	216	215	213	217	218	220
SUNPHARMA	765	759	754	769	775	785
TATAMOTORS	440	433	425	440	448	455
TATAPOWER	72	72	71	72	73	73
TATASTEEL	312	308	304	311	315	318
TCS	2464	2447	2431	2475	2492	2520
TECHM	501	497	492	505	509	517
ULTRACEMCO	3401	3381	3362	3410	3429	3458
VEDL	123	122	121	123	124	125
WIPRO	542	540	538	543	546	549
YESBANK	1070	1061	1051	1072	1081	1092
ZEEL	437	434	430	437	440	443



CORPORATE ACTION / BOARD MEETINGS

NSE Download Ref No:NSE/FAOP/32249:- Exclusion of Futures and Options contracts on IOB and UCOBANK w.e.f. July 01, 2016

NSE Download Ref No : NSE/FAOP/32406:- Exclusion of Futures and Options contracts on Unitech Limited (UNITECH) w.e.f. July 29, 2016

NSE Download Ref No:NSE/FAOP/32511:- Adjustment of Futures and Options contracts in the security ITC Limited. The adjusted strike price shall be arrived at by dividing the old strike price by the adjustment factor i.e. 1.5. The revised market lot would be 2400 w.e.f. July 01, 2016

NSE Download Ref No:NSE/FAOP/32510:- Adjustment of Futures and Options contracts in the security BPCL. The adjusted strike price shall be arrived at by dividing the old strike price by the adjustment factor i.e. 2. The revised market lot would be 1200w.e.f. July 13, 2016

BOARD MEETINGS

COMPANY NAME	DATE	PURPOSE	RS. PER SH.
HDFCBANK	29-Jun-16	Dividend	9.5
HAVELLS	29-Jun-16	Annual General Meeting/ Dividend	3
UNITEDTEA	29-Jun-16	Annual General Meeting/ Dividend	1.7
DABUR	29-Jun-16	Annual General Meeting/ Dividend	1
SOUTHBANK	30-Jun-16	Dividend	0.5
BIRLACORPN	30-Jun-16	Annual General Meeting/ Dividend	6
CENTENKA	1-Jul-16	Dividend	7.5
MAYURUNIQ	1-Jul-16	Annual General Meeting/ Dividend	0.2
ITC	1-Jul-16	Bonus 1:2	
ULTRACEMCO	4-Jul-16	Annual General Meeting/ Dividend	9.5
RADICO	4-Jul-16	Annual General Meeting/ Dividend	0.8
JSWSTEEL	4-Jul-16	Annual General Meeting/ Dividend	7.5
ECLERX	4-Jul-16	Annual General Meeting/ Dividend	1
SUNDARMFIN	5-Jul-16	Annual General Meeting/ Dividend	1
GREENPLY	5-Jul-16	Annual General Meeting/ Dividend	0.6
LGBBROSLTD	5-Jul-16	Annual General Meeting/ Dividend	1
CANFINHOME	5-Jul-16	Dividend	10
AXISBANK	7-Jul-16	Annual General Meeting/ Dividend	5
SWARAJENG	7-Jul-16	Dividend	33
DHFL	8-Jul-16	Dividend	2
MINDTREE	8-Jul-16	Annual General Meeting/ Dividend	3
ABBOTINDIA	8-Jul-16	Annual General Meeting/ Dividend	35

NEWS & RUMOURS:

- Gold (Spot Dollar) major support = \$1294/\$1260 & Resistance = \$1350/\$1379.
- Crude oil range->\$42 to \$52.
- Stocks Halt Brexit Selloff as Pound Rebounds With Commodities: - Stocks, the pound and commodities all climbed for the first time since Britain's shock vote to leave the European Union amid speculation policy makers will take steps to limit any economic fallout.
- Dollar pares losses on upbeat U.S. economic reports: - The dollar pared losses against the other major currencies on Tuesday, as the release of upbeat U.S. data boosted optimism over the strength of the economy, lending support to the greenback.
- Natural gas futures jump to 10-month high amid rising temperatures: - U.S. natural gas futures surged to a ten-month high on Tuesday, as forecasts for continued above-normal temperatures across most parts of the U.S. throughout most of summer raised expectations for power generation demand to meet air conditioning needs. Demand for natural gas tends to rise in the summer months as warmer temperatures increase the need for gas-fired electricity to power air conditioning.
- Oil extends bargain-hunting rally, jumps 3%: - Oil prices extended [hefty overnight gains](#) in North American trade on Tuesday, rising for the first three in time sessions as investors scooped up beaten down assets after Britain's vote to exit the European Union stunned financial markets.
- Gold Declines after Two-Day Brexit Rally as Oil, Copper Rebound: - Gold dropped after posting the biggest two-day gain in more than seven years following the U.K.'s vote to exit from the European Union.

TRENDS & OUTLOOK – DATE: 29- June- 2016

PRECIOUS METALS:

COMMDITY (MCX)	S2	S1	PIVOT POINT	R1	R2
GOLD (Aug)	30861	31030	31290	31660	31966
SILVER (July)	39900	41100	42210	43500	44490

BASE METALS

COMMDITY (MCX)	S2	S1	PIVOT POINT	R1	R2
COPPER (June)	313	318	323	330	336
ZINC (June)	133.20	136.20	139.50	143.10	145.80
LEAD (June)	112.75	115	117.30	120.20	123.45
NICKEL (June)	591	612	624	648	666

ENERGY

COMMDITY (MCX)	S2	S1	PIVOT POINT	R1	R2
CRUDE OIL (July)	3030	3105	3222	3335	3434
NATURAL GAS (July)	180	187	192	198	203

DATE TALKS : TODAY'S ECONOMIC DATA :

FOMC Member Powell Speaks, EU Economic Summit, Core PCE Price Index, Personal Spending, Personal Income, Pending Home Sales, Crude Oil Inventories.



Registered Office

Indira House, 3rd Floor, 5 Topiwala Lane,
Opp. Lemington Road Police Station, Grant Road (East), Mumbai - 400007.

Corporate Office

'Ramavat House' E-15, Saket Nagar, Indore - 452018 (M.P.)

Customer Care

Tel: +91-731-4097170/ 71/ 72/ 73/ 74 M. +91 93031 72345

Email: customercare@indiratrade.com www.indiratrade.com



INSTITUTIONAL DEALING UNIT

Africa House, 5, Topiwalla Lane, Lamington Road, Mumbai, 400007

Tel: +91 22 30080678 Fax : +91 22 23870767 Email : ie@indiratrade.com

Disclaimer

This report is for private circulation within the Indira Group. This report is strictly confidential and for information of the selected recipient only and may not be altered in any way, transmitted to, copied or distributed, in part or in whole, to any other person or to the media or reproduced in any form. This report should not be construed as an offer or solicitation to buy or sell any securities or any interest in securities. It does not constitute a personal recommendation or take into account the particular investment objectives, financial situations, or any such factor. The information, opinions estimates and forecasts contained here have been obtained from, or are based upon, sources we believe to be reliable, but no representation of warranty, express or implied, is made by us to their accuracy or completeness. Opinions expressed are our current opinions as of the date appearing on this material only and are subject to change without notice.